



# Establishing New Production Facilities

2021



A close-up photograph of industrial machinery, likely a large stainless steel tank or reactor, with various pipes, valves, and a circular access port. The background is slightly blurred, showing more of the industrial environment. A thin yellow diagonal line runs across the image from the bottom left towards the top right.

# To make production efficient

*is our goal*

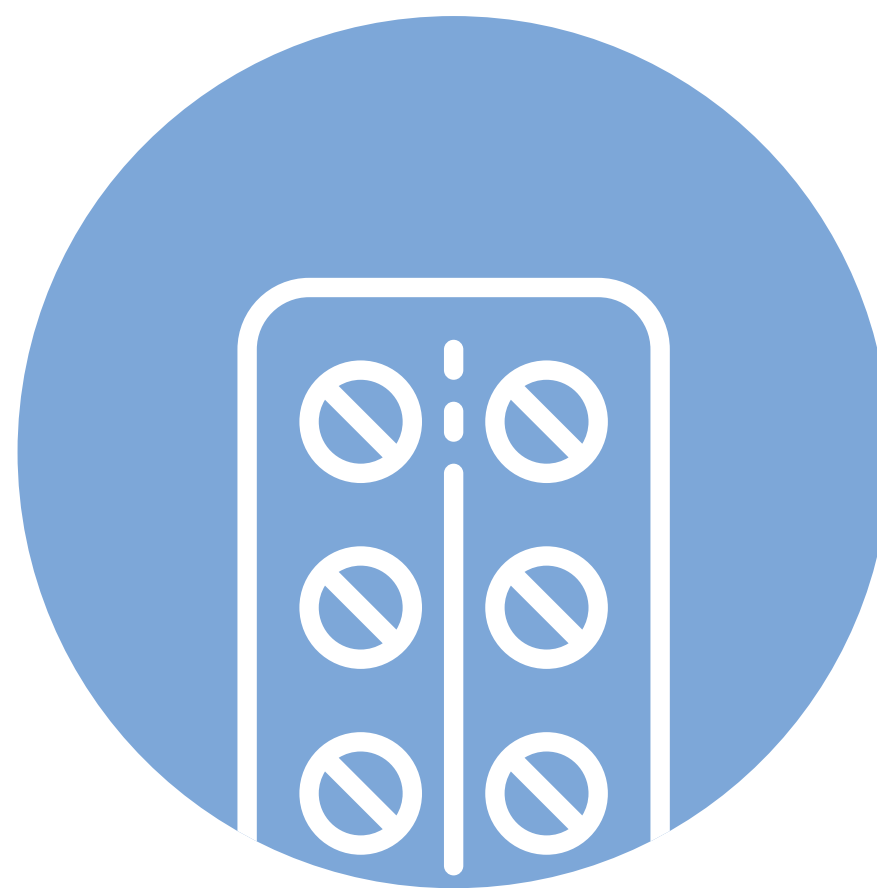


EXPERIENCE

# Operating in four industry sectors



**Perfume  
and cosmetic**



**Pharmaceutical**



**Food industry**



**Petrochemistry**



EXPERIENCE

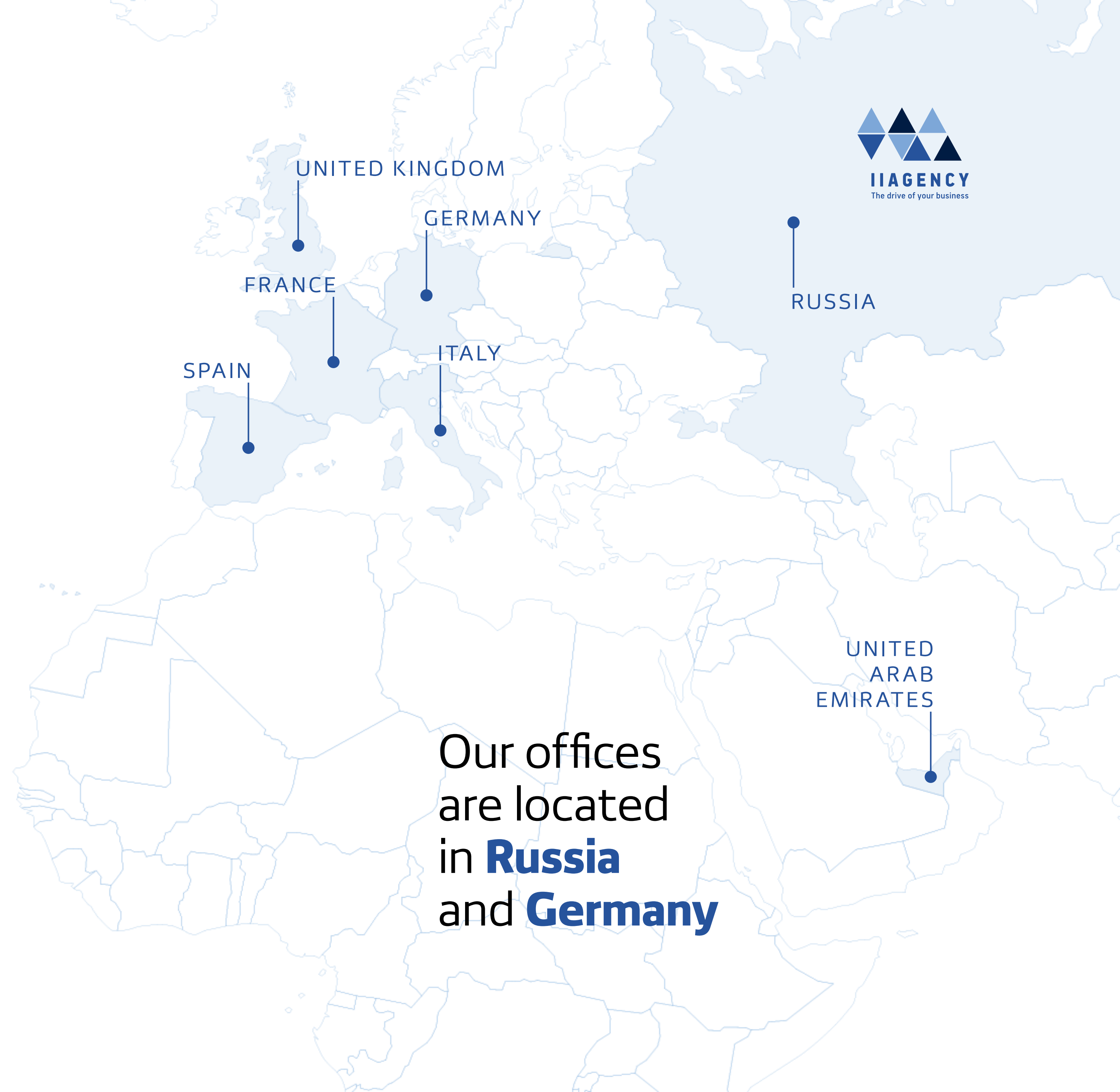
**10**  
**years**  
of successful  
operation





EXPERIENCE

**25**  
**implemented**  
**projects**  
with global  
and local  
companies  
**in 7 countries**



EXPERIENCE

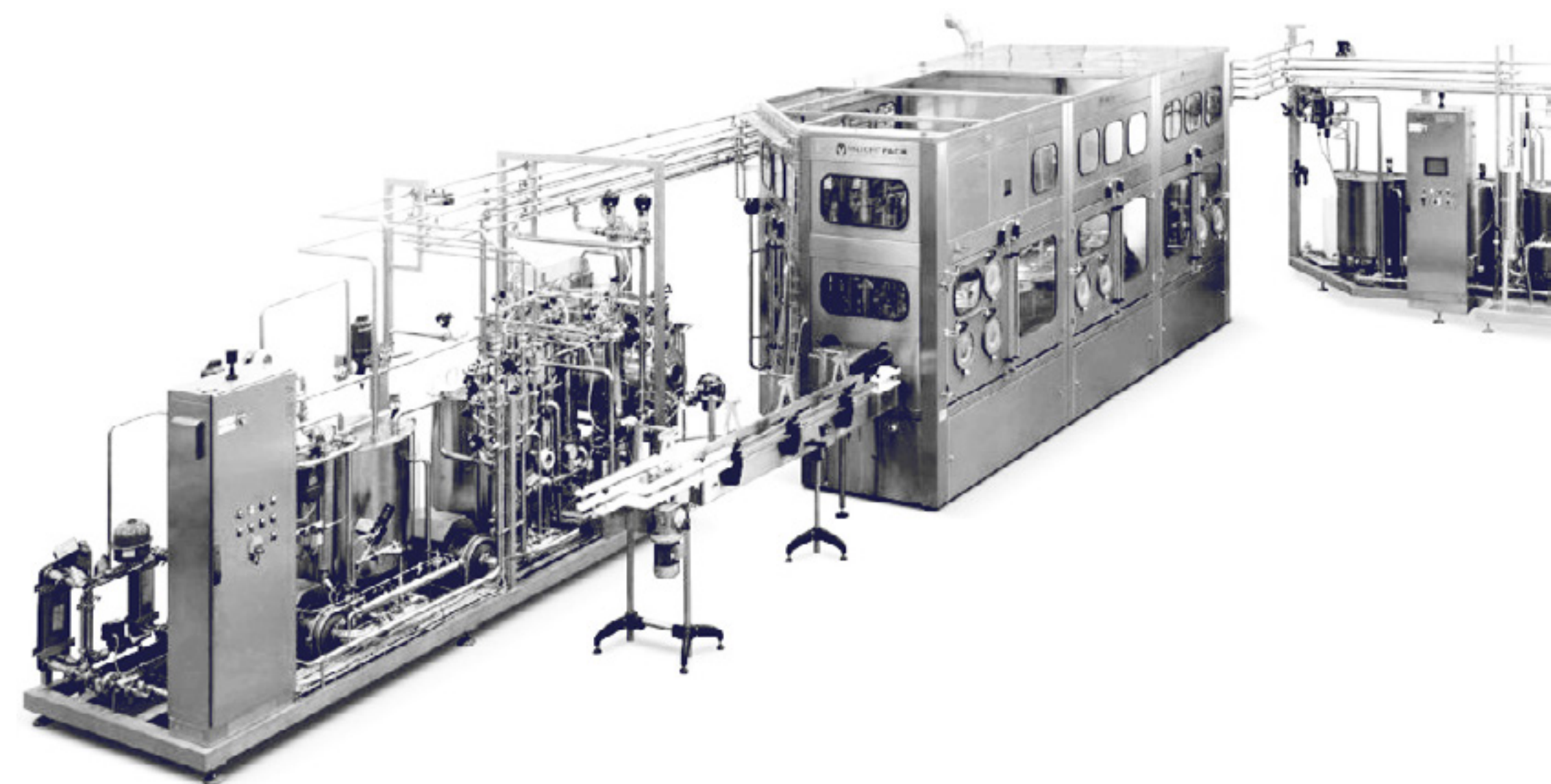


# Regular contracts **for imported equipment and spare parts supply** (used as well)

with Henkel, Coca-Cola, P&G, Nestlé,  
Oriflame, Sibur, Agrana, SC Johnson

Scope of supply in 2017

**€3,300,000**





WE ARE READY TO PROPOSE



**Development and startup  
of manufacturing facilities**



**Import of the  
equipment**



**Engineering and  
assembly works**



# Production Design and Start-up



# 1 Own factory floor experience

We know **how production works** and **what technologies are used**.  
We will develop the technological process, optimally capture the equipment, determine the number of employees



Clear understanding  
of production tasks

European design  
engineers employed





## <sup>2</sup> We are good at perfume cosmetic field



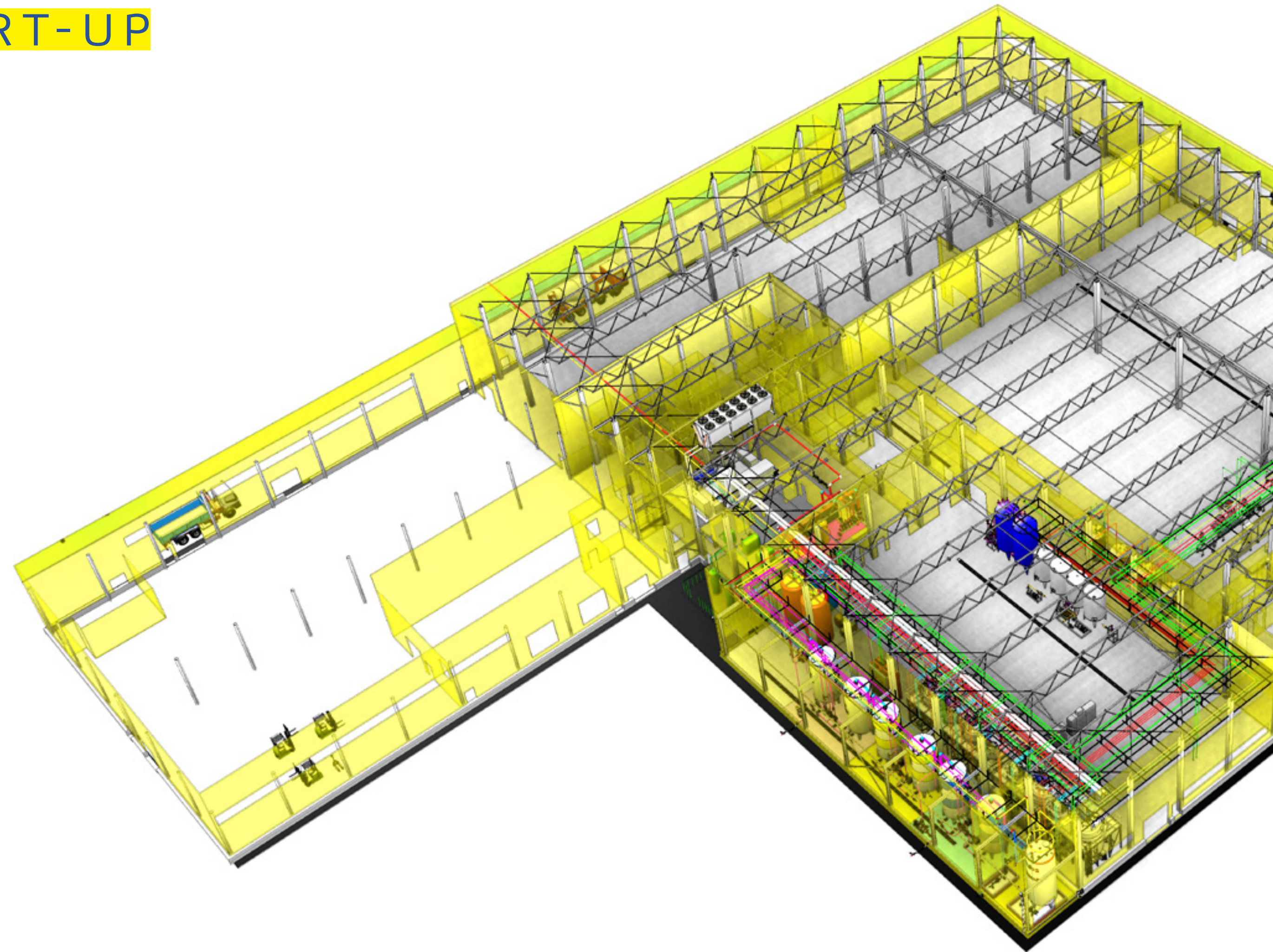
**More than 20 years of experience**  
with the production of shampoos  
and hair conditioners, hair dyes  
and hair sprays, shower gels,  
creams and air fresheners





### 3 3D-design of productions

Prior to practical implementation,  
we clearly demonstrate the project  
in the form of a three-dimensional model



Assessment of access to service  
of equipment and pipelines

Correct connection  
to supply lines

Making  
the required changes



## 4 Highly-qualified personnel

Internal staff of **skilled engineers and handy erection crew** as well as high level of production culture



We choose only the best to our team

Jobbers do not work in our team

Salaries are 25% higher than the market average





## 5 **Reliable modern equipment**

We use only well  
proved equipment





## 6 Clear arrangement of working process

We distribute work on the project between the staff members and perform it **on schedule**. We record stages, terms and responsible persons



We use project management systems to allocate resources and equipment





## PRACTICAL ACTIVITY

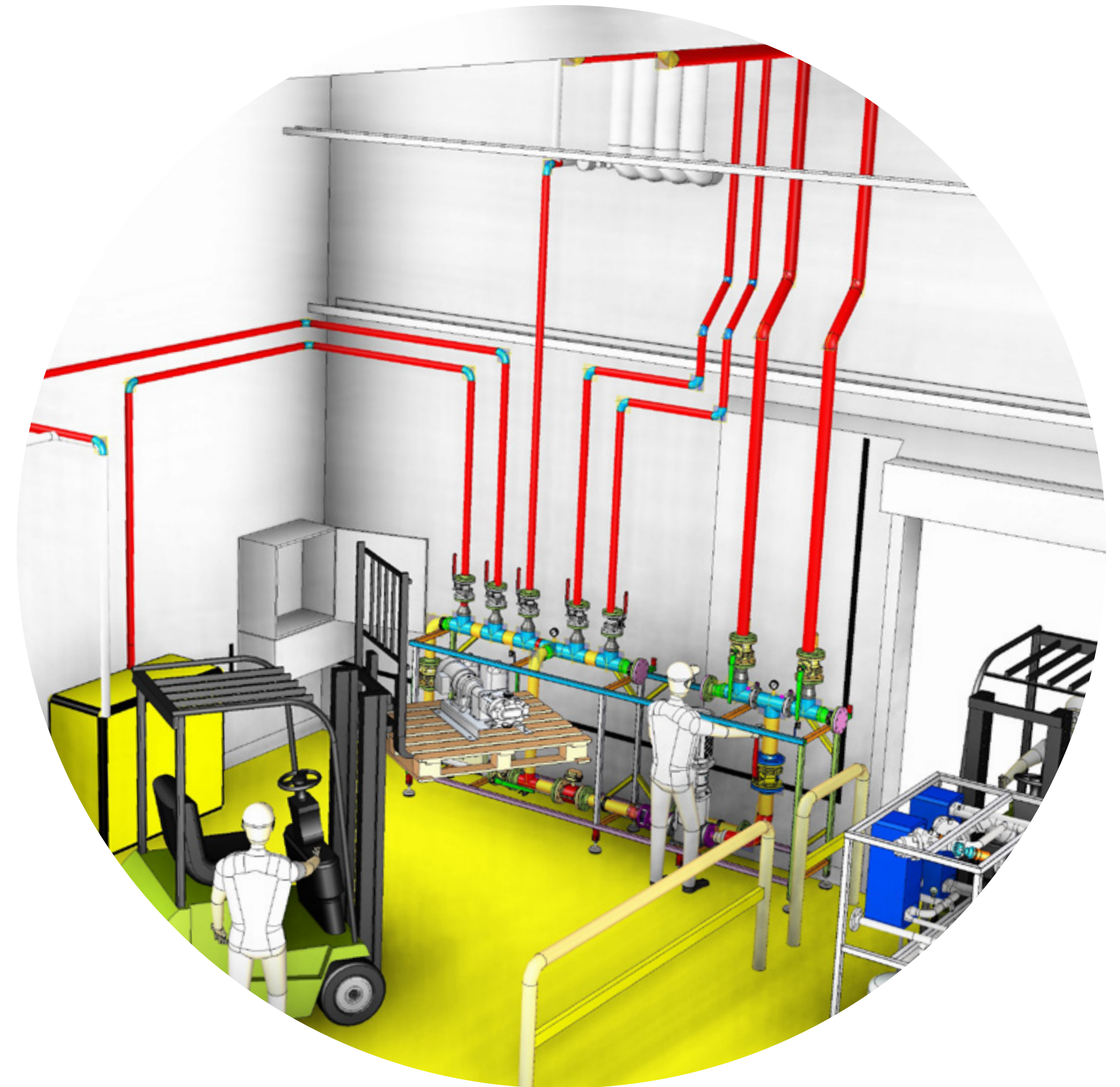
Expansion of actual capacity of the plant  
for production cosmetic products  
in Tula region

Specific task

# To install a new water treatment and distribution system

in an operating production workshop

Using a **3D-model** we optimally select  
the location and ways of the system servicing,  
perform the required connections,  
check working capacity of the system.  
Then we deliver project.



**We eliminate  
the risks of**

material  
crossflow

lack of service  
availability

inaccurate assessment of the required  
material amount and project deadlines



# Import of Equipment





IMPORT OF EQUIPMENT

# Own equipment import department

We select and buy new or used equipment and materials. We transport and pass customs clearance. We skip dealer contracts **and provide favorable prices and short delivery terms.**



European Internal  
Market prices

Urgent delivery  
within 48 hours





# Engineering and Assembly Works





## ENGINEERING AND ASSEMBLY WORKS

# We ensure uninterrupted operation of production facilities

We carry out assembly with no production interruption



Warehouse of the most in-demand materials, including foreign production materials

Emergency service, urgent site visit of specialists





## PRACTICAL ACTIVITY

Shampoos and conditioners  
production plant  
in Moscow region

# Careful assembly of expensive equipment

For its new production, the plant purchased high quality reactors of the world leader — Symex.

We carefully transported and installed the reactors in the shop. We connected them to supply lines: Texapon supply, demineralized water and compressed air, steam and other energy resources. We manufactured and assembled service platforms. We followed operation schedule. The release of finished products began on due time.



### We eliminate the risks of

contamination of the product  
due to improper assembly

damage  
of the equipment

delays in putting  
the equipment into operation

high costs of foreign  
specialists involvement



## PRACTICAL ACTIVITY

New household  
chemistry production plant  
in Novgorod region

# Assembly of household chemistry production lines

For new plant, SC Johnson has invited us for assembly of three production lines equipment.

We successfully implemented all stages: transportation, unloading, assembly and connection of equipment to existing pipelines: compressed air, steam, water, glycol and other resources. We carried out joint commissioning works. We followed operation schedule.



**We eliminate  
the risks of**

damage  
of the equipment

incorrect connection  
of utilities

delays in putting  
the equipment into operation

violation of processes due  
to improper assembly



ENGINEERING AND ASSEMBLY WORKS

# Successful experience of modernization and expansion of plants



Reducing the cost  
of resource consumption

Adding new segments  
to current production





## PRACTICAL ACTIVITY

Operating enterprise of juices  
and sweet soda water bottling  
in Moscow

Task

# To reduce materials and energy resources costs

at the operating enterprise

With the existing production flowchart,  
about 50% of the prepared water for syrup  
cooldown was flown.

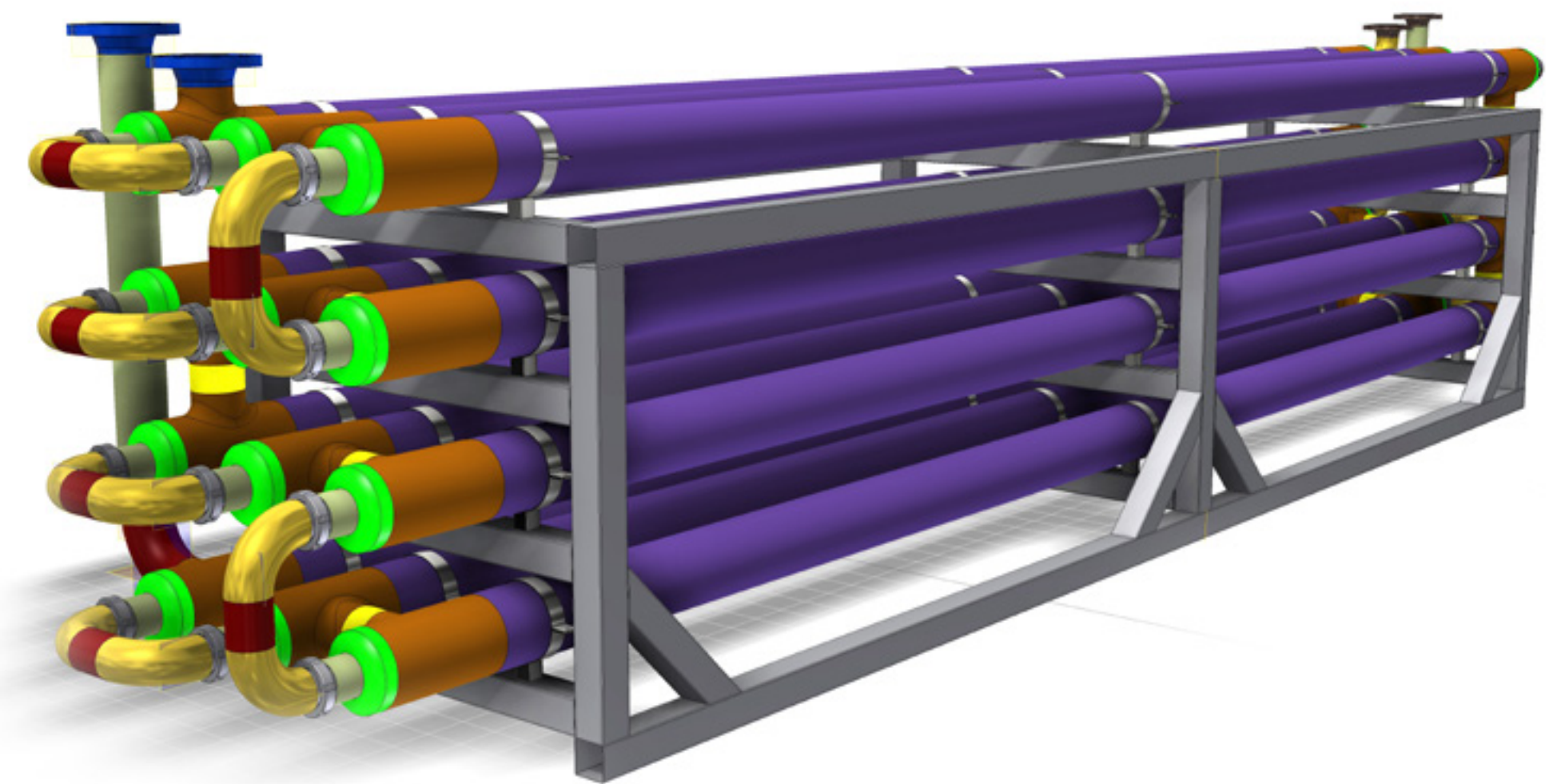
We introduced and assembled  
the system where this water is cooled,  
disinfected and supplied for syrup production.

Resource cost savings

**₽4,800,000 a year**

Outlay recovery terms

**7 months**





## CUSTOMERS



### Coca-Cola HBC Russia

Partner of the Coca-Cola Company for beverages bottling and a part of the Coca-Cola System — one of the most developed systems for production and distribution of NABs in the world



### Henkel Rus — Wellchem

One of the biggest Russian enterprises for cosmetics and household cleaning goods production



### The Procter & Gamble

Multinational manufacturer of consumer goods in the field of household cleaning goods, means of women's and children's sanitary protection, cosmetics



### Nestlé Purina PetCare

Pet food production



### Oriflame Cosmetics

Development, production and sale of skin care products, personal care products, fragrances and color cosmetics, health food products Wellness and accessories



### Sibur — NPP Neftekhimia

Production of polypropylene



### Agrana Fruit

Production of fruit fillings



### Nevskaya Cosmetica

One of the ten major manufacturers of cosmetics and detergents in Russia



### Abrau Durso

Leading Russian manufacturer of sparkling wine, made both according to classic bottle and reservoir technologies



### Bumfa

Production and marketing of sanitary-hygienic and cosmetic goods



### MSZ Alexandrovskiy

The largest factory in the Stavropol region making fat-an-oil products and cheese



### Sahibi

Sunflower oil production



## CUSTOMERS



### Barony Universal

UK,  
cosmetics,  
aerosol products



### Kematen Cosmetics

Germany,  
cosmetics



### Emmegi Detergents S.p.A.

Italy,  
cosmetics



### Bayer

Germany,  
pharmaceutics



### TUNAP Cosmetics

Germany,  
cosmetics



### FAREVA

Turkey,  
cosmetics, pharmaceutics,  
aerosol products



### Eva Cosmetics

Egypt,  
cosmetics



### Tropical Galil

Israel,  
cosmetics



### Green Planet Industries LLC (VVF Dubai)

United Arab Emirates,  
organic cosmetics



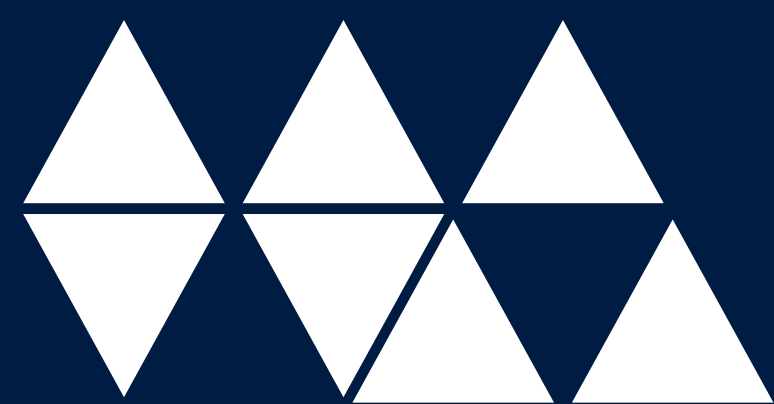
### SC Johnson

USA,  
household cleaning goods



**Thank you  
for your  
attention!**





**II AGENCY**

The drive of your business

## **International Industrial Agency LLC**

ul. 1-ya Ilyicha, str. 14, Noginsk  
Moscow region, 142402, Russia

tel. (+7 495) 268-09-08

[www.iiagency.ru](http://www.iiagency.ru)